



SHUTTLE FEEDER

Automatic Loading of Flat, Even Product

Benchmark® offers a complete line of Shuttle Feeders for automatic loading of rigid products with consistent thickness. Shuttle Feeders deliver precise, continuous motion loading of vertically stacked product from a gravity chute or chute elbow. A reciprocating plate mounted on linear bearings loads product directly into the flights of a horizontal wrapper at speeds up to 400 packages per minute. Shuttle Feeders accommodate multiple product sizes and stack counts. Chute elbows are adjusted without tools to minimize product changeovers. Scheduled maintenance is made easy with minimal moving parts and easy access to key components. Shuttle Feeders reduce labor cost and minimize repetitive motion while allowing higher wrapper speeds. ROI is typically under a year.

FEATURES AND BENEFITS

- Efficient, reliable operation
- Quick, easy changeovers
- Intuitive operation
- Maintenance friendly
- Easy to clean
- No painted surfaces
- Short Term ROI
- 304 stainless steel frame and guards
- Reciprocating pusher on linear bearings
- Adjustable stroke length and timing
- Servo gearbox for integration with horizontal wrapper remote axis servo motor

TYPICAL PRODUCT DIMENSIONS

Length: 1"-8"

Width: 1"-6"

Height: Based on product thickness variation

Speed: Up to 400 ppm based on product dimensions

SPECIFICATIONS

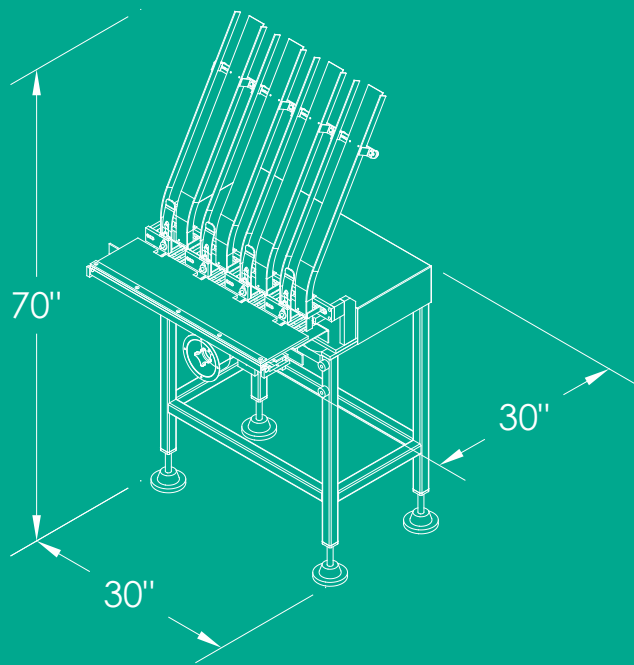
Power: 230V/460V, 3PH, 60HZ

Controls: Remote servo axis on horizontal wrapper or independent servo control with a multi-line keypad operator interface

OPTIONS

- Adjustable chute elbow(s)
- Loweator for tall stacks

CONFIGURATION



CONSTRUCTION

Our rugged design and attention to detail results in long equipment life. Using stainless steel and aluminum construction throughout, this feeder is built to perform year after year. Paint free surfaces eliminate the concern of product contamination caused by flaking or chipping.

EASY TO OPERATE

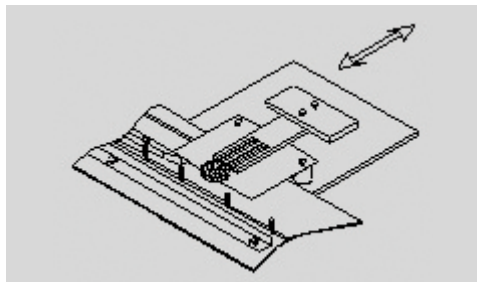
Operators hand load gravity chute(s) with groups of product. Shuttle Feeder can be provided with fully automatic distribution systems.

FLEXIBILITY

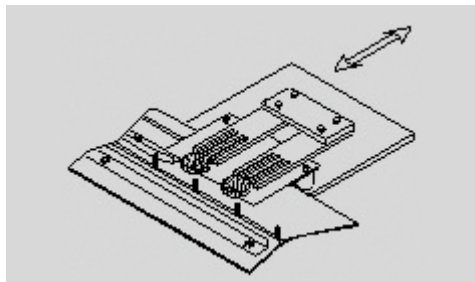
Shuttle Feeders are capable of running a variety of product sizes. Most product changes can be performed without tools and completed in less than 5 minutes.

SHORT TERM ROI

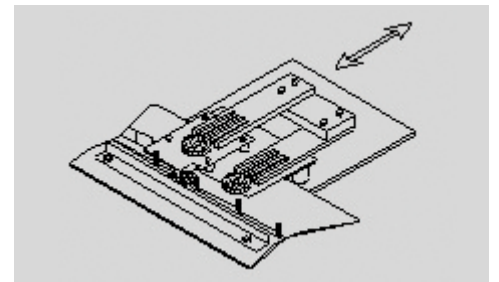
Shuttle Feeders reduce labor cost and minimize repetitive motion while allowing higher wrapper speeds. The low capital cost coupled with minimal installation typically results in a return on investment of under a year.



Reciprocating pusher loads product between continuous motion wrapper infeed flights.



Multiple feed locations for high speed product loading with reduced cycle speeds. Each feed location feeds every other flight.



Stack building across multiple feed locations for product with variations in thickness. Each feed location feeds every flight.